

VHF Contests from an HF Contesters Perspective

George Fremin III, K5TR

Is VHF contesting different from HF contesting?

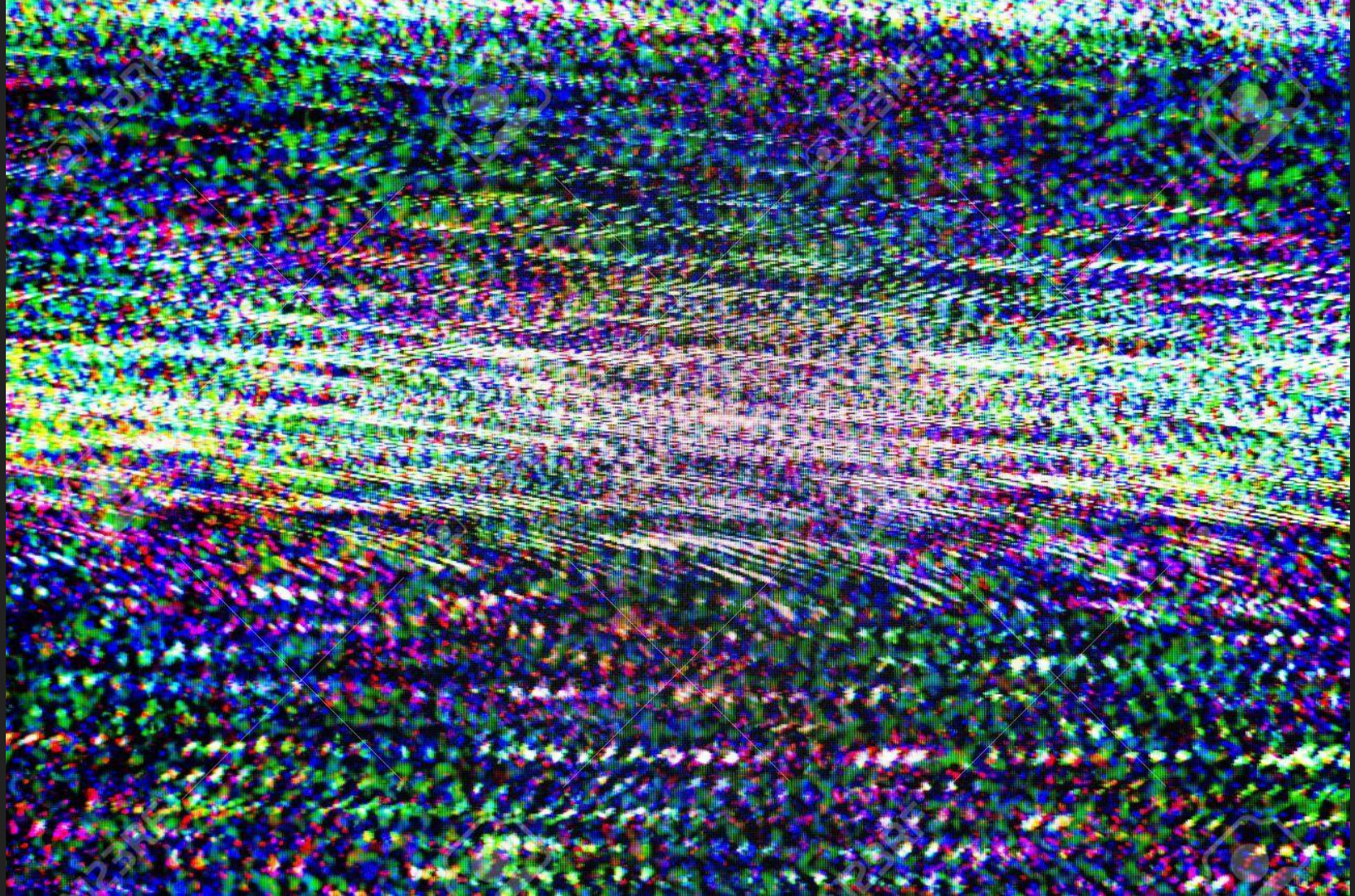
Is VHF contesting different from HF contesting?

But first a little...

History



26.11.1977





 ICO

SSB CW
TRANSCEIVER

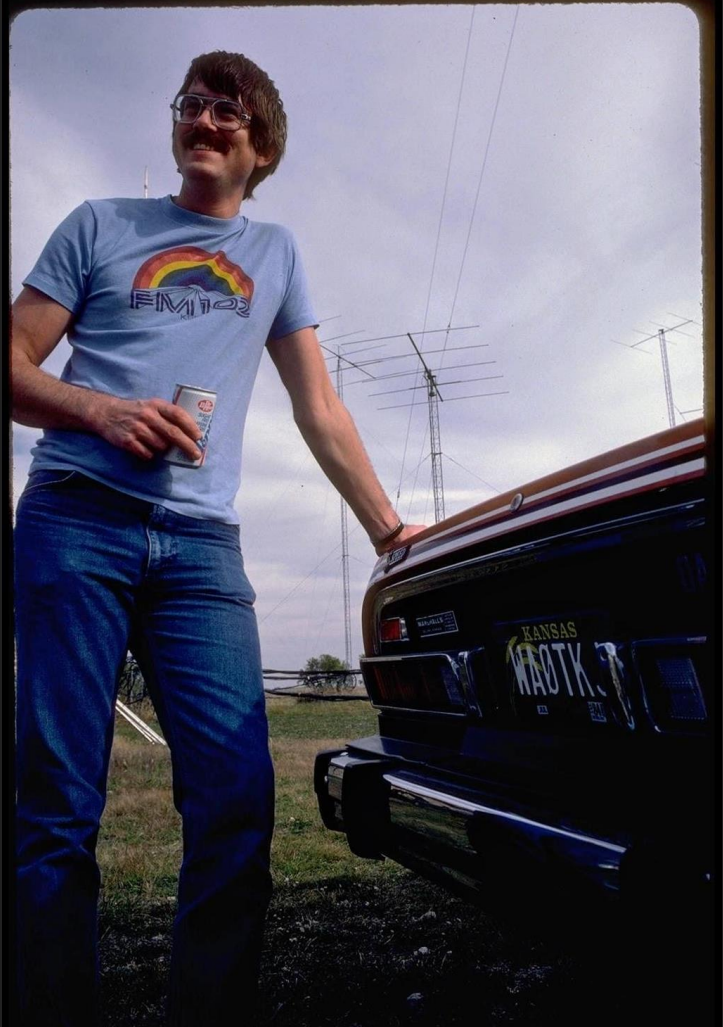
IC 702A

CORPORATE















now back to our
regularly scheduled
programming

Is VHF contesting different from HF contesting?

Is VHF contesting different from HF contesting?

HF contest activity happens across six bands

1.8 3.5 7 14 21 28

Is VHF contesting different from HF contesting?

HF contest activity happens across six bands

1.8 3.5 7 14 21 28

Spanning a bit under 30 Mhz

Is VHF contesting different from HF contesting?

VHF contests happen (mostly) across 10 bands

50 144 222 432 902 1296 2304 3456 5760 10368

Is VHF contesting different from HF contesting?

Vhf contests happen across (mostly) across 10 bands

50 144 222 432 902 1296 2304 3456 5760 10368

Spanning more than 10,000 Mhz

Is VHF contesting different from HF contesting?

Vhf contests happen across (mostly) across 10 bands

50 144 222 432 902 1296 2304 3456 5760 10368

Spanning more than 10,000 Mhz

Some make contacts on bands above 10 Ghz



CH. SELECT



LOAD METER



PLATE



DRIVE



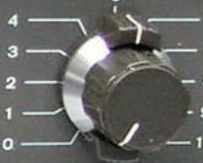
KENWOOD SSB TRANSCEIVER



LOAD RIT



DX PULL ON MIC CAR



AF GAIN RF GAIN



MODE



JJY/WWV

TS-520



RIT



BAND



FUNCTION



POWER

K4EAA



BAND

TUNE

GRID CURRENT

PLATE CURRENT

GRID

PLATE

LOAD

TRANSMIT

POWER

VR-PIP

COMMANDER HF-8500

OPERATE

ON

STANDBY

OFF





TELEPHONE





KENWOOD

HF/VHF/UHF ALL MODE MULTI BANDER TS-2000 DSP



PF
LOCK
ATT
PRE
LEVEL
VOX
LEVEL
PROC
ANT 1/2
SEND
AT

PHONES
LEVEL
NR
LEVEL
AN
MANUAL
MIC
BC
LO/WIDTH

CH1/REC CH2/REC CH3/REC
1 2 3
TONE/SEL METER CTCSS/SEL
4 5 6
NB/LEVEL AGC/OFF FINE/STEP
7 8 9
DCS/SEL SHIFT/OFFSET
0 ENT
HI/SHIFT

AUTO
CAR
LSB
USB
TX MONI
REV
PWR
CW
FSK
DELAY
NAR
FM
AM
CLR
SEL
DISP
1MHz



MENU
TF-SET
CALL
C.IN
M/S
A/B
VFO/CH
VFO/M
MAIN
SUB
SG.SEL
SCAN
CTRL

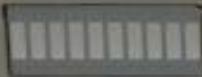
QUICK MEMO
MR M.IN
SATL
REV
SPLIT
TRACE
A=B
MG.SEL
M.VFO
M.IN

MANUAL
BC MAIN
RF GAIN
AF
SQL

CW/TUNE
RIT
ALT
XIT
CLEAR
P.C.T.
SET
9.6k STA CON
RIT/SUB
MULTI CH







RF POWER

LOCK



XMIT

ON

POWER



Down East Microwave Inc.



Made In USA



POWER

+12V

TX

144 Mhz TRANSVERTER



manual select xvtr2

manual select xvtr1

manual select xvtr3

remote

manual bypass

Transverter Selector

W6PQL
1/2016

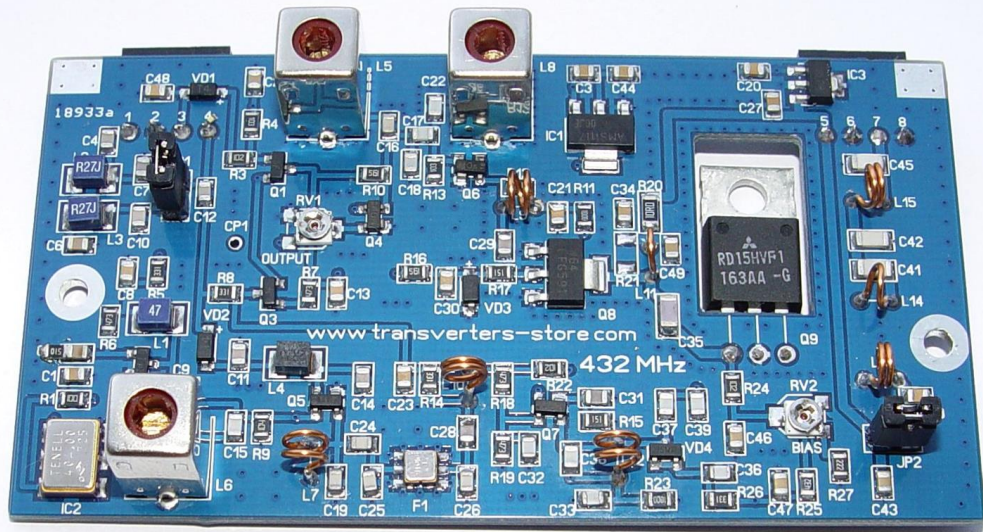












RF coverage from 325 MHz to 3.8 GHz



Simple software 'hack' will allow coverage from 70 MHz to 6 GHz



HF + 50 Mhz

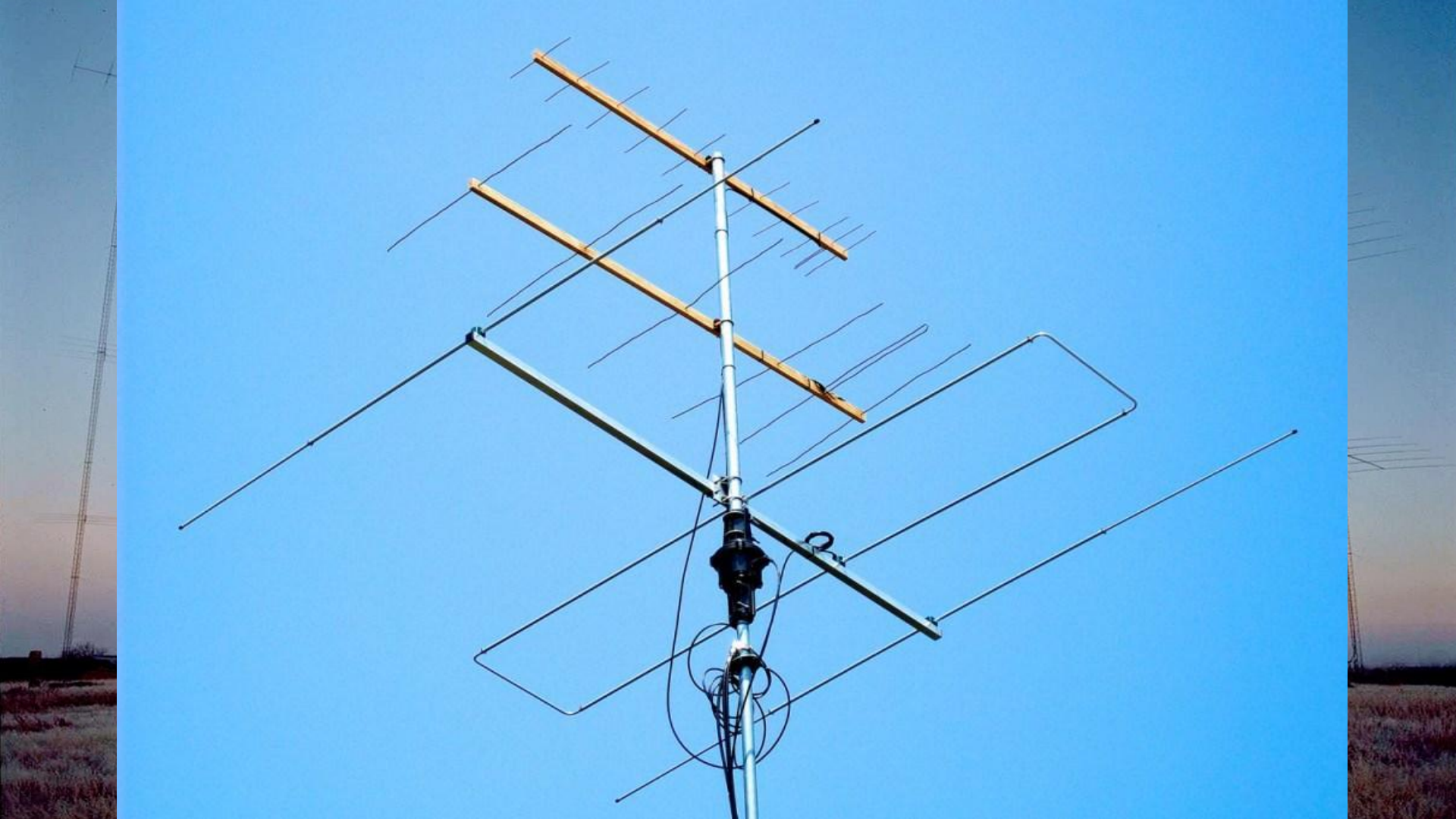
Is VHF contesting different from HF contesting?

HF antennas are

BIG

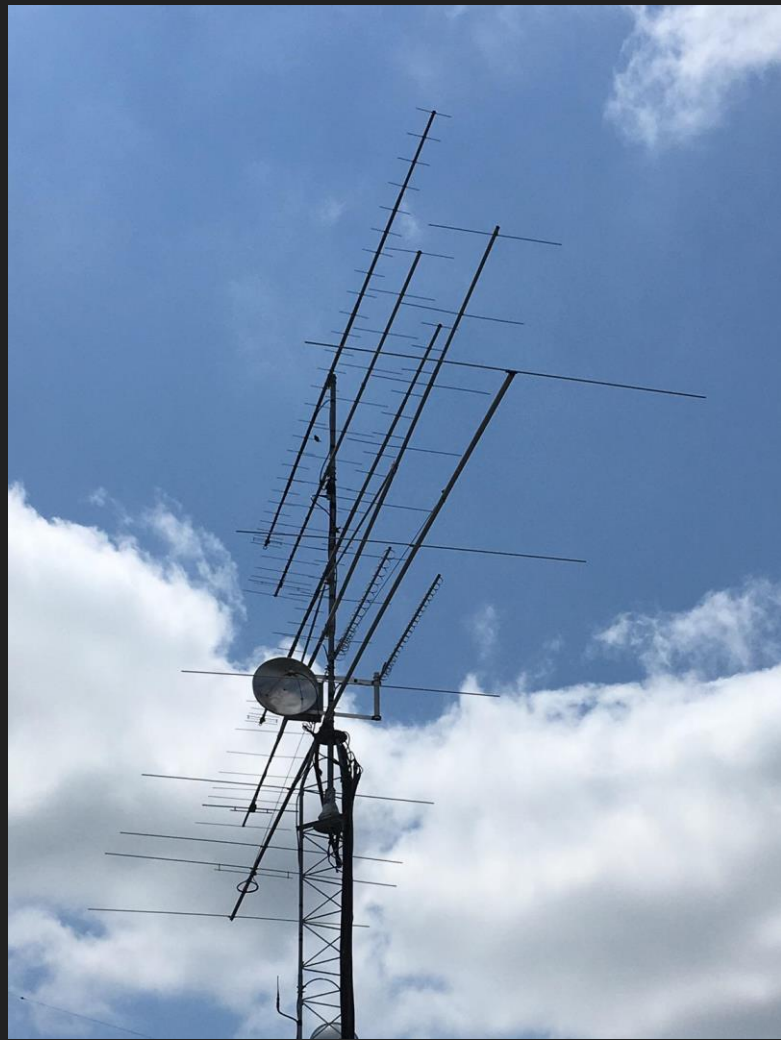














Is VHF contesting different from HF contesting?

Operating

Is VHF contesting different from HF contesting?

What general characteristics describe HF contests and HF contest operating?

Is VHF contesting different from HF contesting?

What general characteristics describe VHF contests and VHF contest operating?

Is VHF contesting different from HF contesting?

Assistance

Is VHF contesting different from HF contesting?

Is VHF contesting different from HF contesting?

I find that the HF and VHF contest experience is
basically the same.

Is VHF contesting different from HF contesting?

When I am in the moment - it feels the same to me on the radio and in the way I operate the contest.

Is VHF contesting different from HF contesting?

When I am in the moment - it feels the same to me on the radio and in the way I operate the contest.